

Snowy 2.0 OOHW Work Notification

Polo Flat | July 2020



Activity: Pouring concrete to construct the segment factory and batch plant foundations

Location: Polo Flat Road and Carlaminda Road, Cooma

Timing: Intermittent Out of Hours Work from 6am-7am, and 6pm-11.59pm
Mondays to Saturdays from 15 July to 30 September 2020

Out of hours work may be required to construct the foundations for the Snowy 2.0 segment factory and batch plant at Polo Flat.

The segment factory at Polo Flat is required to manufacture precast concrete segments to line the tunnels being excavated for Snowy 2.0. The factory will operate to facilitate the production of precast concrete tunnel segments that will be transported to the Snowy 2.0 project sites at Lobs Hole and Tantangara.

Works will involve

Work may be undertaken out of hours to pour the concrete foundations that will house the segment factory and associated batching plant.

Future Generation will carry out the following activities:

- Laying 4000m³ of concrete for the segment factory foundations, involving approx. 20 pours from July to September 2020.
- Laying 1300m³ of concrete for the batch plant foundations, involving approx. 7 pours from July to September 2020.
- Out of hours work will not be carried out on Sundays and public holidays, and concrete pours will be scheduled to minimise impact.

What to expect

In order to complete the foundations the following intermittent out of hours works may be required:

- Set up the site between 6am-7am to prepare for construction work starting at 7am.
- Pour concrete from 7am until completion. Pours may run beyond 6pm subject to progress of works throughout the day and is expected to be completed before 10pm.
- Finishing works on the foundations between 6pm and 11.59pm to facilitate curing after the concrete is poured.
- Work may involve a range of plant and equipment such as concrete trucks and pumps, concrete helicopters, lighting towers and generators, cranes, traffic control vehicles, and semi-trailers delivering material to site.
- The work is not expected to be noisy and is being planned to ensure minimal disruption for local residents.

Thank you for your understanding while we carry out this work. Periodic updates will be issued as work progresses. The program of work may be subject to change based on weather, design, unexpected finds and scheduling requirements.

For more information

If you have any questions please contact the **Snowy 2.0 Community Information Line 1800 766 992** (1800 Snowy 2) or Future Generation Joint Venture via email community@futuregenerationjv.com.au

Snowy 2.0 is a major pumped hydro expansion of the Snowy Scheme and will continue to create jobs and business opportunities across the region. It is the largest renewable energy project in Australia that will add 2,000 megawatts of energy generation and provide 175 hours of storage to ensure the stability and reliability of the system. Snowy 2.0 will link the two existing Snowy Scheme dams, Tantangara and Talbingo, through underground tunnels and an underground power station with pumping capabilities.

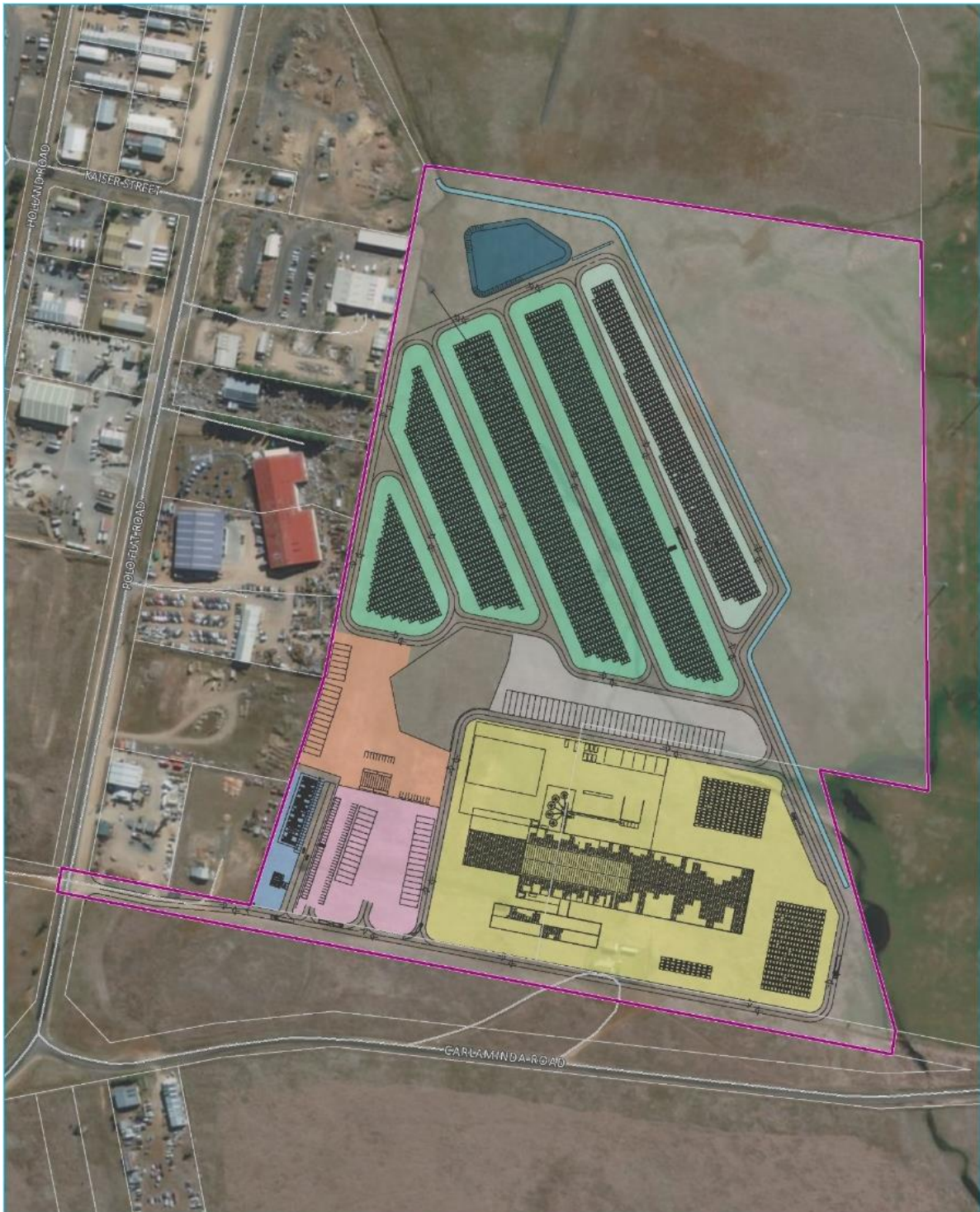


Figure 1: Layout of Snowy 2.0 Segment Factory and facilities at Polo Flat