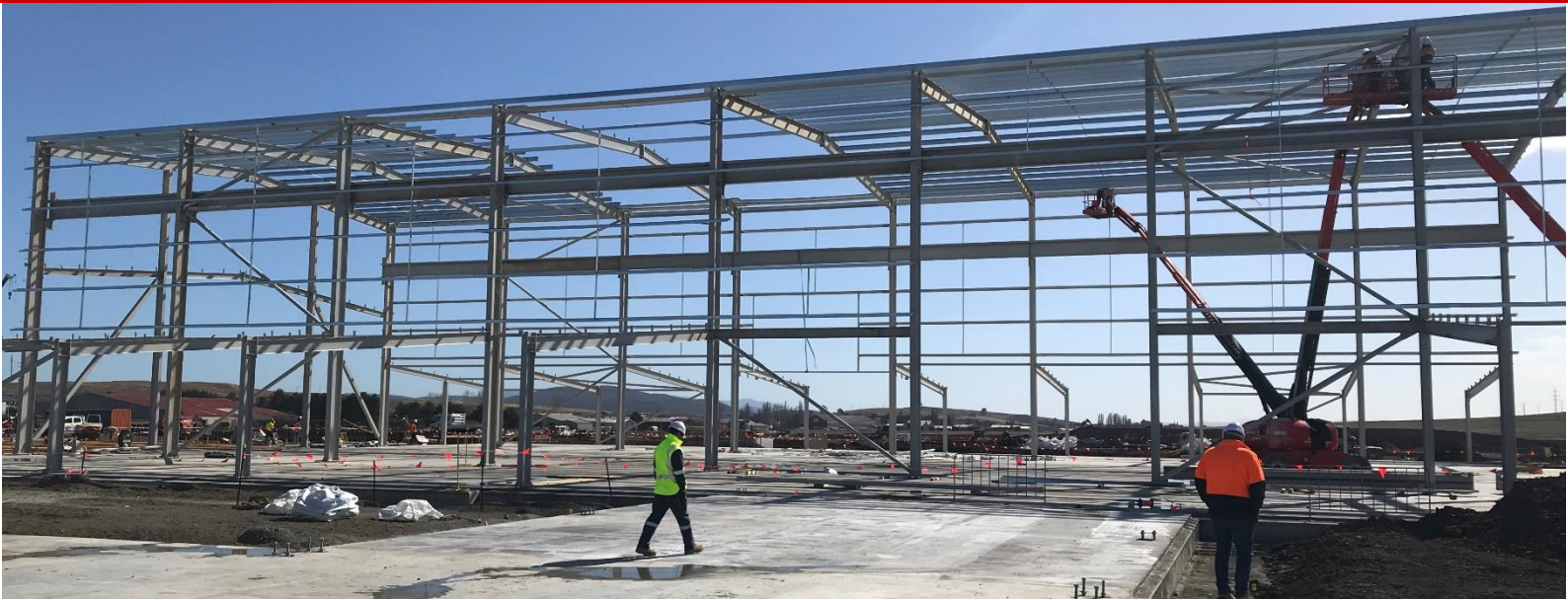


Snowy 2.0 OOHW Work Notification

Polo Flat | September 2020



- Activity:** Pouring concrete and erecting buildings to construct the segment factory and batch plant
- Location:** Polo Flat Road and Carlaminda Road, Cooma
- Timing:** Intermittent Out of Hours Work from 6am-7am, and 6pm-midnight
Mondays to Fridays from 23 September to 31 October 2020

Out of hours work is required to construct the Snowy 2.0 segment factory and batch plant at Polo Flat.

The segment factory at Polo Flat will manufacture precast concrete segments to line the tunnels being excavated for Snowy 2.0. The factory will operate to facilitate the production of precast concrete tunnel segments that will be transported to the Snowy 2.0 project sites at Lobs Hole and Tantangara.

Works will involve

The following work may be undertaken out of hours to pour concrete foundations and construct the buildings for the segment factory and batching plant:

- Out of hours work will not be carried out on weekends and public holidays, and concrete pours will be scheduled to minimise impact.
- This may involve work on consecutive days, Mondays to Fridays.

Periodic updates may be issued as work progresses. The program of work is subject to change based on weather, design, unexpected finds and scheduling requirements.

What to expect

In order to complete the foundations the following intermittent out of hours works may be required:

- Set up the site between 6am and 7am to prepare for construction work starting at 7am.
- Pour concrete from 7am until completion. Pours may run beyond 6pm subject to progress of works throughout the day and is expected to be completed before 10pm.
- Finishing works on the foundations between 6pm and midnight to facilitate curing after the concrete is poured.
- Work may involve a range of plant and equipment such as concrete trucks and pumps, concrete helicopters, lighting towers and generators, cranes, traffic control vehicles, and semi-trailers delivering material to site.
- The work is not expected to be noisy and is being planned to ensure minimal disruption for local residents.

For more information

Thank you for your understanding while we carry out this work. If you have any questions please contact the **Snowy 2.0 Community Information Line 1800 766 992** (1800 Snowy 2) or Future Generation Joint Venture via email community@futuregenerationjv.com.au

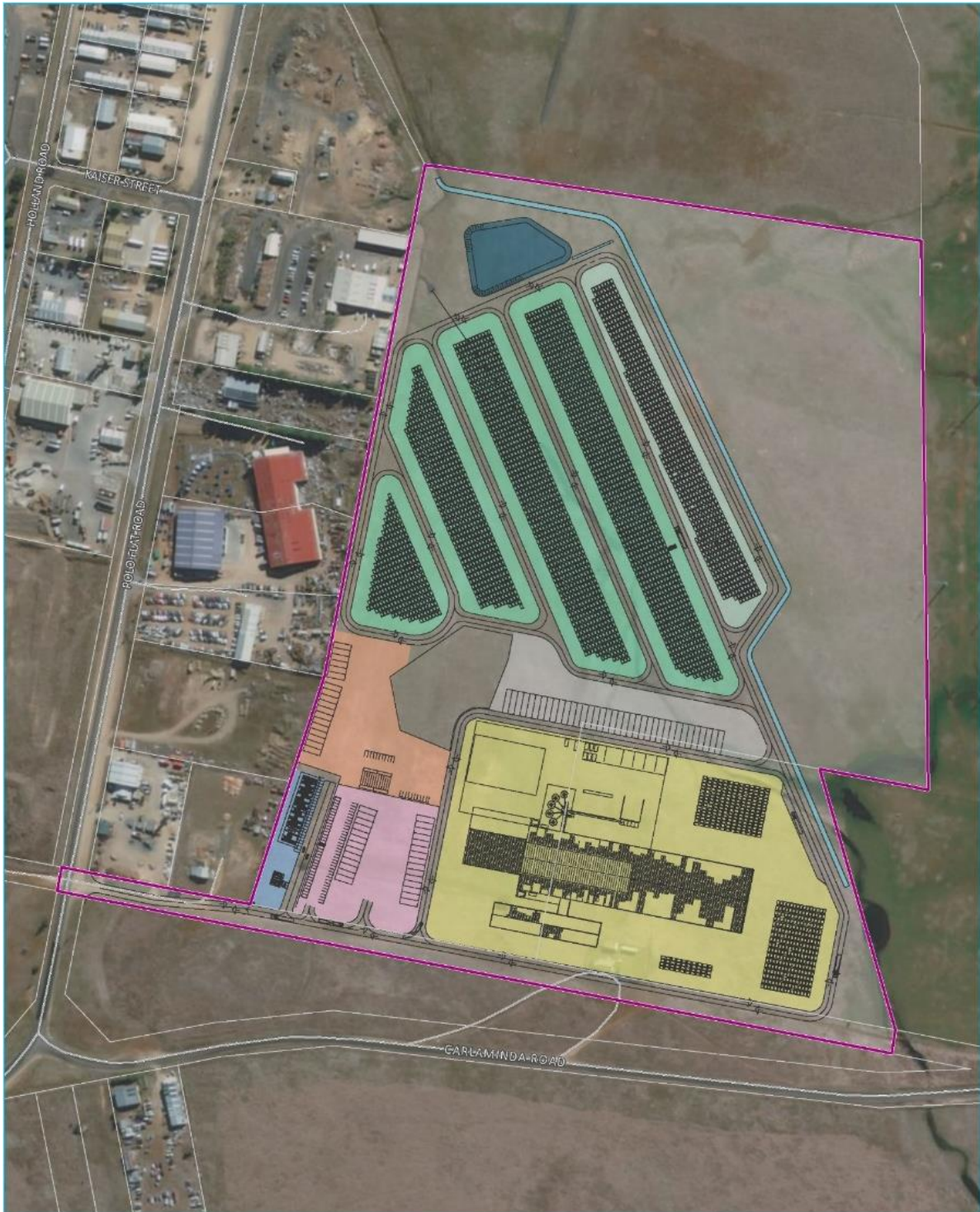


Figure 1: Layout of Snowy 2.0 Segment Factory and facilities at Polo Flat

Snowy 2.0 is a major pumped hydro expansion of the Snowy Scheme and will continue to create jobs and business opportunities across the region. It is the largest renewable energy project in Australia that will add 2,000 megawatts of energy generation and provide 175 hours of storage to ensure the stability and reliability of the system. Snowy 2.0 will link the two existing Snowy Scheme dams, Tantangara and Talbingo, through underground tunnels and an underground power station with pumping capabilities.